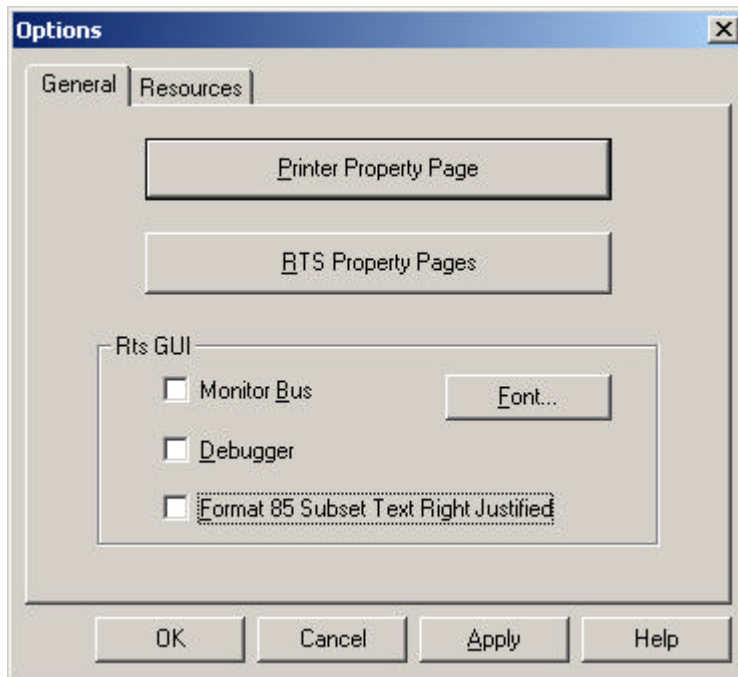


**Release Notes  
PAWS WRTS  
Version 01.34.10  
12 December 2006**

- 1.1 Critical Items
- 1.2 Known Limitations
- 1.3 Enhancements
- 1.4 Problem Reports

**PR06048** Right Justified OUTPUT for 85 Subsets

The RTS Options property dialog now provides a user the option to “right justify” the OUTPUT text to the RTS Station Info screen using the “**Format 85 Subset Text Right Justified**” checkbox. This has been provided to match the legacy implementation for 85 based subsets (like ESTS, IFTE ...etc). By default all text displayed in the Station Info is left justified.



**PR06029** Display issues with standard INPUT dialogs & screens

In a standard TPS using INPUT dialogs like (text input, Boolean input) or resource screens (like HTML Resource screen & Video Resource Screen), if the screens were

moved out of the visual display area and the WRTS was closed, the next time the TPS would run, the INPUT screens would seem missing (actually they still maintain their relative positions outside the normal visual area). This has been corrected to redisplay the screens within the current visual area on the monitor, if such a condition should exist.